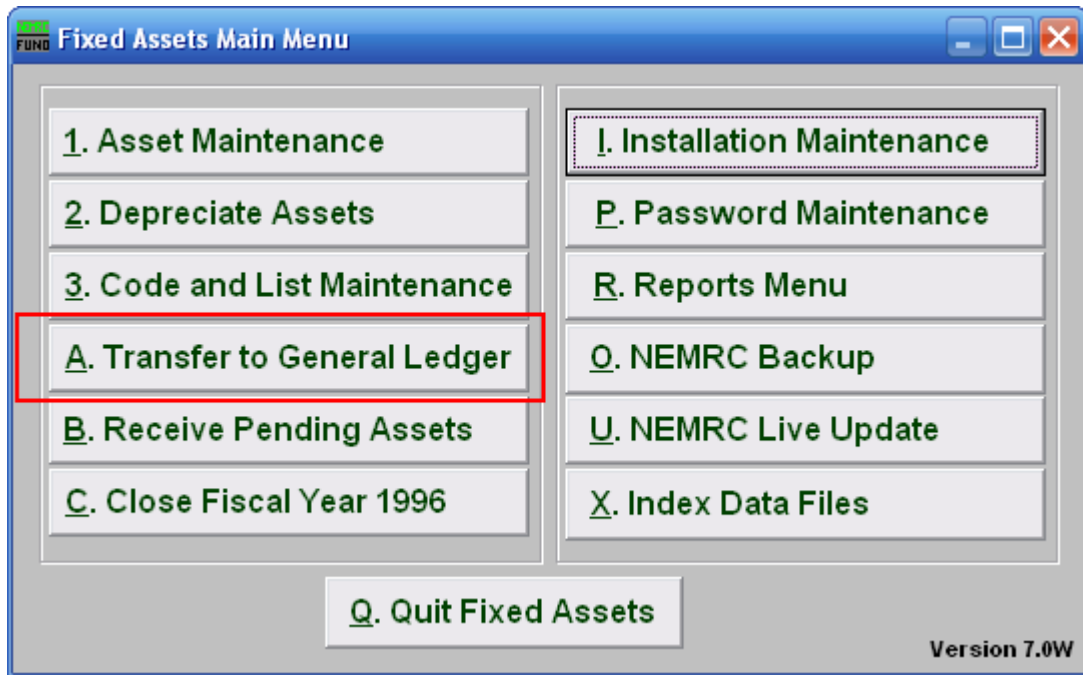


Fixed Assets

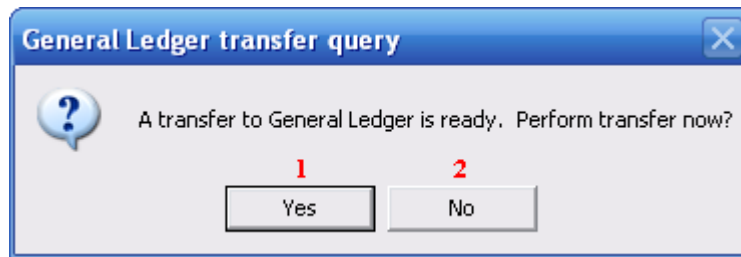
A. Transfer to General Ledger



Click on “A. Transfer to General Ledger” from the Main Menu and the following window will appear:

Fixed Assets

Transfer to General Ledger



- 1. Yes:** Click on “Yes” if you want to transfer to General Ledger.
- 2. No:** Click on “No” if you want to cancel and return to the previous screen.